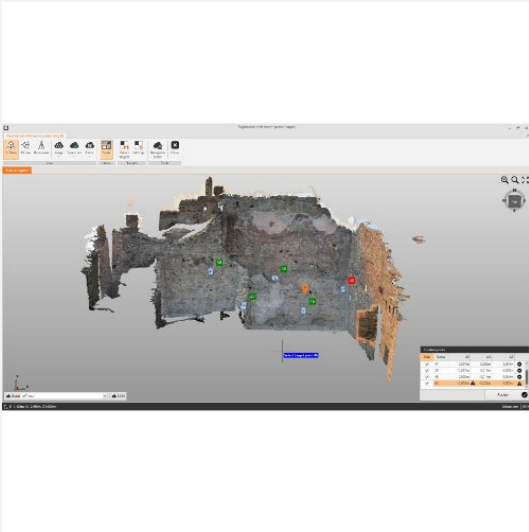


Software GeoMax X-Pad Ultimate

Highest productivity

Product number :292xxxxx



All special features at a glance

- X-PAD Ultimate ensures productivity in the field and offers perfect integration between measuring devices.
- 3D viewer
- Integrating your data with maps Using sensors and voice commands
- Camera for augmented reality
- Direct data exchange with cloud platforms
- Use of sensors and voice commands

Description

X-PAD Ultimate ensures maximum productivity in the field. It supports the perfect integration of your measuring instruments. X-PAD Ultimate is a tailor-made, flexible, modular, ideal and customised software for demanding topographic tasks, such as measurement, staking, cadastre, BIM checking and control, road planning, cartography, bathymetry and GIS. The best technologies for topography are provided on Android devices: a full 3D viewer and CAD system for viewing and editing drawings, integration of your data into maps, camera support for augmented reality, direct data exchange with cloud platforms, use of sensors, voice commands and much more. Available in two versions, one for the professional surveyor and the other for the construction company. X-PAD Ultimate Build: ideal for construction surveying (specifically aimed at construction companies). You don't have to be a surveyor X-PAD Ultimate Survey: the best solution for professional surveyors. With TPS and GNSS measurement tools

Technical Details

Scope of supply